



# MYORPG

# Senior Design Group 24

Jonathan Morris, Henry Williams, Clay Surfus, Nadine Quibell

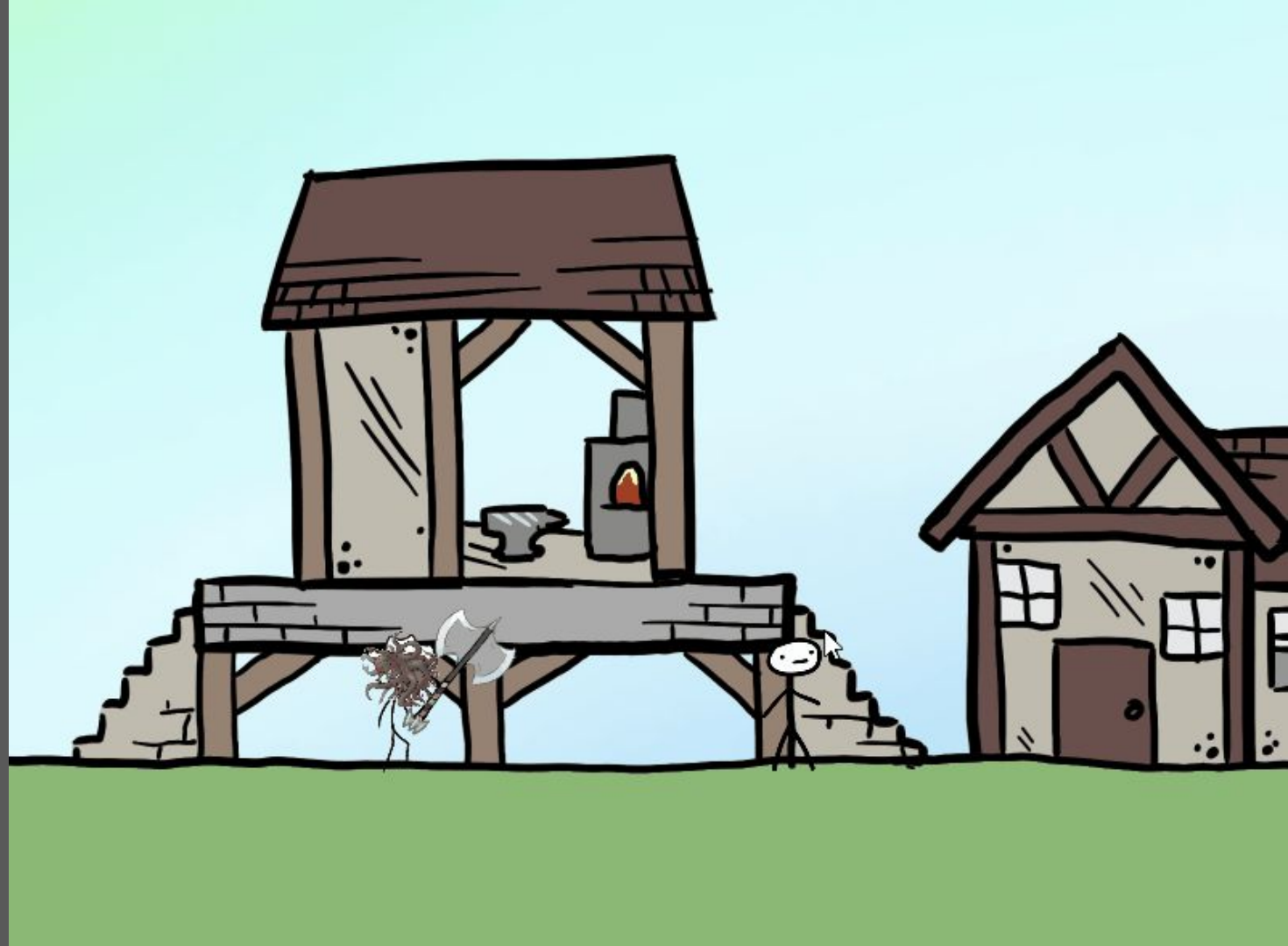
Team Leader Email: [quibell@iastate.edu](mailto:quibell@iastate.edu)  
Advisor: Mohamed Selim ([myoussef@iastate.edu](mailto:myoussef@iastate.edu))



# About Our Project

MYORPG = Make Your Own Role Playing Game

- MMORPG = Massively Multiplayer Online RolePlaying Game
  - WoW, Runescape, LoTRO
  - Players pilot a character on a free-form adventure in a relatively open world, full of NPCs to interact with
  - Multiplayer allows players to team up for bigger tasks
- Inspired by the numerous Flash Games made in the 2000s
- Make Your Own: MYORPG is focused around the concept of player-made content





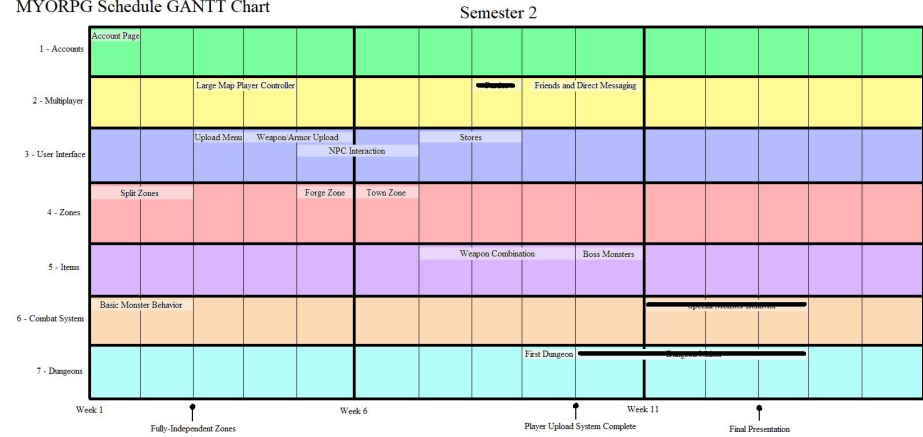
# Javascript: Why?

- Accessibility
- Old-school, Flash player feel
- Flexibility not offered by many game development platforms
- Unity multiplayer switched over to pay-to-develop

# Semester Goals

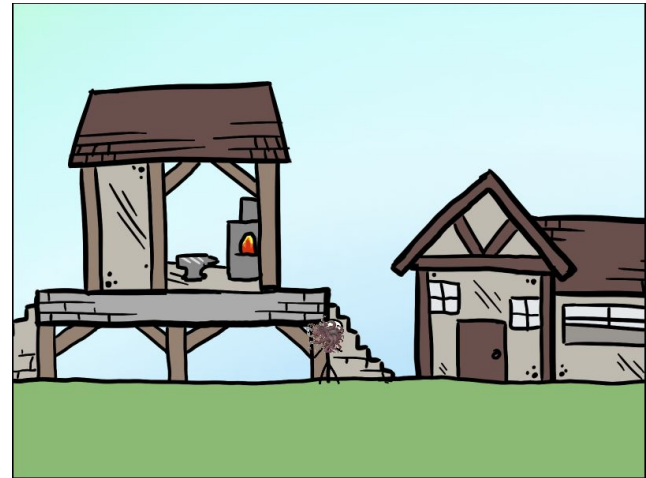
Changes due to the shorter semester and COVID

MYORPG Schedule GANTT Chart



# Zone Split

A whole new server!





# World Interaction

Player Avatar controlled via WASD keys.

- Monsters
- NPCs
- Weapon Forge





---

# Monster Behavior

Boss vs Normal monster behaviour: Interaction range

- Normal monsters simply chase the closest player, attacking once they are 'in contact with the target of their pursuit.
- Boss monsters, once implemented, would chase the closest player with the capability to attack from a distance.





# Accounts & Passwords Reset

Users can reset passwords incase of a forgotten password.

- Users enter their username and will receive a reset link to the email associated with the account
- Each reset link contains a unique token used to reset the account account associated
- Tokens expire after 24 hours

MYORPG Password Reset Inbox x



**reset@myorpg.games**

to me ▾

Hello csurfus! Please click [here](#) to reset your password! The link will expire in 24 hours.

← Reply

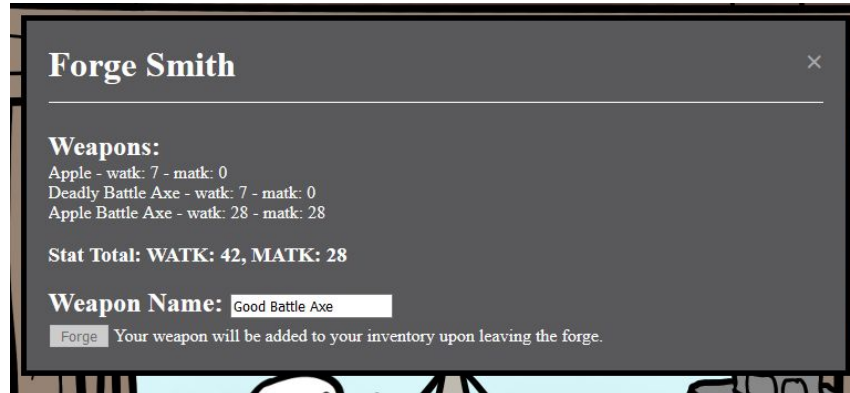
➡ Forward



# Weapon Forge

Users can select existing items from inventory to create new weapons

Stats of each weapon selected are added to create a more powerful weapon.






[Home](#)   [Play](#)   [Profile](#)   [Upload](#)   [Approve Content](#)   [Logout](#)

### Approve Content:

#### Item Approval Queue

Item Name	Graphic	Action
Banana		<input type="button" value="Approve"/> <input type="button" value="Deny"/>

#### Monster Approval Queue

Monster Name	Graphic	Str	Dex	Inte	Wis	Vit	Approve
Cookie Monster		1000	0	5	4	3	<input type="button" value="Approve"/> <input type="button" value="Deny"/>

## Content Approval

Content can be approved by admins and moderators.

Page can only be accessed by admins and moderators.

Player Levels:

User

Moderator

Admin



# Content Uploading & Moderation

## Player made content

- Players can upload custom equipment and avatars to the game
- Equipment can be found by other players in the game world

## Moderation

- Moderators and admins can review content uploaded
- Offensive content can be controlled as a result
- Players categorized into users, moderators, and admins.



# Security

Passwords and configuration need to be stored properly

- Passwords on database are hashed, preventing potential attacks
- The admin password is an instance by instance configuration

pass
a7a61dcde66af9118fbb732f112bae05
1037bfa23f6b5b3f67acb988ced6c583
1037bfa23f6b5b3f67acb988ced6c583
7c5537076b4c4dc9262f62c5cae7bf08
c7ced0ead01a036e4f4711674860609d
e072ea5816b8a653228fa3e350cc88e6
162536b371985b95f529a1a2c383c596f6b0851...
7ecd81d6f7ffe835548444c4929f5c92
6dc03bf44eb3d08b07c30dd3ea6d1f29
fa14cf53889f7c8e518b1a5bf7955a2e
6dc03bf44eb3d08b07c30dd3ea6d1f29
720ff01a84fa48368e58febe92350472
<b>NULL</b>



# Thank you!

Play the game at:  
[www.MYORPG.com](http://www.MYORPG.com)

Team feedback:

[quibell@iastate.edu](mailto:quibell@iastate.edu)